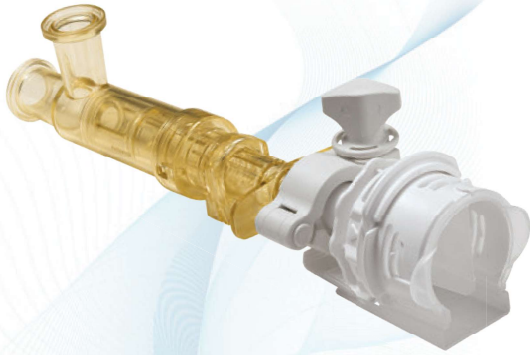


ASEPTIQUIK® STC SERIES CONNECTOR



AseptiQuik® STC Connectors integrate the AseptiQuik® sterile connector and the Steam-Thru® II SIP connector, giving manufacturers even greater flexibility for hybrid stainless steel and single-use processing. The AseptiQuik STC connector combines either an AseptiQuik G or AseptiQuik C sterile connector with a Steam-Thru II connection that can be mounted directly to a stainless steel vessel via a sanitary termination. AseptiQuik STC connectors utilizing an AseptiQuik G sterile connector offer a genderless design, simplifying system integration at the aseptic connector end. AseptiQuik STC connectors utilizing an AseptiQuik C sterile connector allow system designers to incorporate a keyed female-to-male connection at the aseptic connector end.

The union of the two connectors into a single unit through a sanitary clamp allows an AseptiQuik sterile connection to be steamed on to stainless equipment via SIP. After the SIP cycle, a wide range of single-use systems can be connected. The SIP process can be done in advance allowing a quick and easy sterile connection to the AseptiQuik half without having to wait 30-60 minutes for SIP prior to harvest.

FEATURES

AseptiQuik design
Genderless design
Innovative three-port steam design
Robust construction
Patented steam valve design
Sanitary interface between the two connectors
CPC Click
Market availability

BENEFITS

Innovative three-step connection process reduces risk of operator error
Eases integration of single-use systems with universal mating between AseptiQuik G Connectors
Allows a true steam-through SIP process which eliminates "dead legs"
Repeatable and reliable performance with no additional hardware required
Allows sterile connection and disconnection to stainless equipment and permits a high media flow rate.
More secure connection than tubing with cable ties
Audible confirmation of assembly steps
Open access through multiple supply chain partners

Specifications

PRESSURE:

Steam position: Up to 35 psi, 2.4 bar
Flow position: Up to 20 psi, 1.4 bar

TEMPERATURE:

Steam position:
Up to 275°F (135°C) for 60 minutes
Flow position: 39°F to 104°F (4°C to 40°C)

STERILIZATION:

Gamma: Up to 50kGy irradiation
AutoClave: High Temp (HT) version:
Up to 266°F (130°C) for 30 minutes (AQSTC)
Up to 266°F (130°C) for 60 minutes (AQSGTC)

Note: A slight clockwise rotation of the clamp nut may be needed after autoclave.

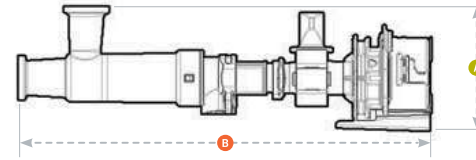
MATERIALS:

Main Components:

AseptiQuik - Polycarbonate (white), USP Class VI, ADCF
Steam-Thru II - Polysulfone (amber tint), USP Class VI, ADCF
Seals: Silicone (clear), platinum-cured, USP Class VI, ADCF
Pull Tabs:
Polycarbonate (blue, standard version), USP Class VI, ADCF
Polycarbonate (white, HT version), USP Class VI, ADCF
Caps: Polypropylene (clear), USP Class VI, ADCF
Membrane:
Polyethylene (standard version), USP Class VI, ADCF
Hydrophobic polyethersulfone (HT versions), USP Class VI, ADCF, PTFE strip sticker
Clamp: Nylon 66 (white), USP Class VI

Note: Mates with gendered and genderless AseptiQuik connectors.

ASEPTIQUIK® STC SERIES DIMENSIONS



A = Height/Diameter
B = Total Length
C = Actuated Length

Mates with gendered male and female AseptiQuik Series.

Coupling Bodies

• POLYCARBONATE with Blue Pull Tabs



TERMINATION
3/4" X 3/4" SANITARY STEAM-THRU II WITH ASEPTIQUIK BODY
3/4" X 1-1/2" SANITARY STEAM-THRU II WITH ASEPTIQUIK BODY (PICTURED)

PART NO.	A	B	C
AQSTC2330900	2.78 (70.6 mm)	9.25 (235 mm)	8.42 (213.9 mm)
AQSTC2331000	2.78 (70.6 mm)	9.25 (235 mm)	8.42 (213.9 mm)

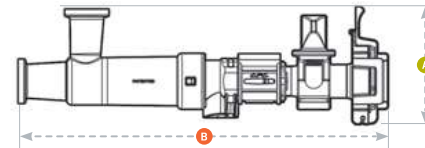
• POLYCARBONATE HT with White Pull Tabs



TERMINATION
3/4" X 3/4" SANITARY STEAM-THRU II WITH ASEPTIQUIK BODY (PICTURED)
3/4" X 1-1/2" SANITARY STEAM-THRU II WITH ASEPTIQUIK BODY

PART NO.	A	B	C
AQSTC2330900HT	2.78 (70.6 mm)	9.25 (235 mm)	8.42 (213.9 mm)
AQSTC2331000HT	2.78 (70.6 mm)	9.25 (235 mm)	8.42 (213.9 mm)

ASEPTIQUIK® G STC SERIES DIMENSIONS



A = Height/Diameter
B = Total Length
C = Actuated Length

Mates with genderless AseptiQuik G Series.

Coupling Bodies

• POLYCARBONATE with Blue Pull Tabs



TERMINATION
3/4" X 3/4" SANITARY STEAM-THRU II WITH GENDERLESS ASEPTIQUIK G BODY
3/4" X 1-1/2" SANITARY STEAM-THRU II WITH GENDERLESS ASEPTIQUIK G BODY

PART NO.	A	B	C
AQGSTC2330900	3.05	8.26	7.36
AQGSTC2331000	3.05	8.26	7.36

• POLYCARBONATE HT with White Pull Tabs

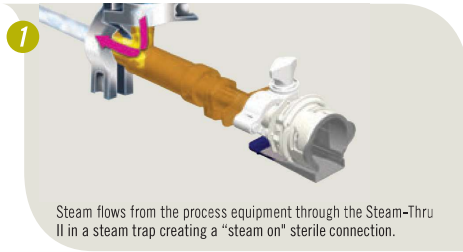


TERMINATION
3/4" X 3/4" SANITARY STEAM-THRU II WITH GENDERLESS ASEPTIQUIK G BODY
3/4" X 1-1/2" SANITARY STEAM-THRU II WITH GENDERLESS ASEPTIQUIK G BODY

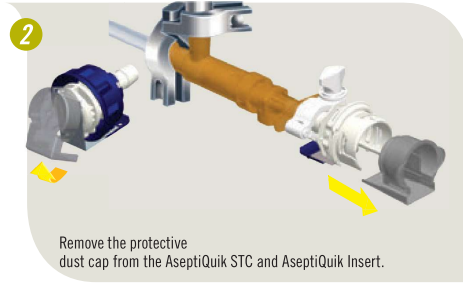
PART NO.	A	B	C
AQGSTC2330900HT	3.05	8.26	7.36
AQGSTC2331000HT	3.05	8.26	7.36

ASEPTIQUIK® STC SERIES ASSEMBLY PROCEDURE

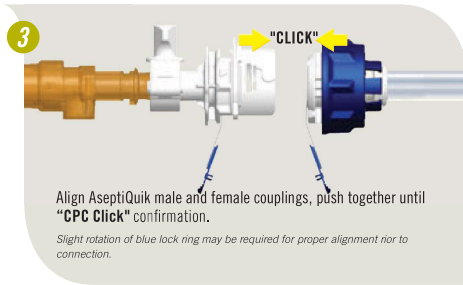
CLICK-PULL-TWIST Assembly Procedure



Steam flows from the process equipment through the Steam-Thru II in a steam trap creating a "steam on" sterile connection.

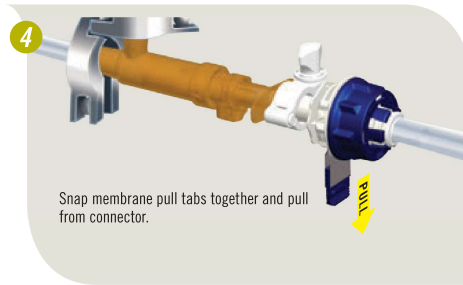


Remove the protective dust cap from the AseptiQuik STC and AseptiQuik Insert.



Align AseptiQuik male and female couplings, push together until "CPC Click" confirmation.

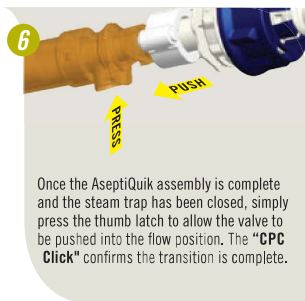
Slight rotation of blue lock ring may be required for proper alignment prior to connection.



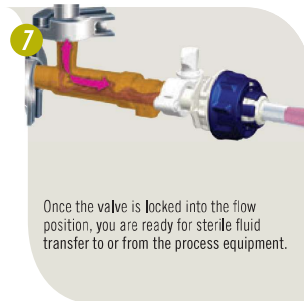
Snap membrane pull tabs together and pull from connector.



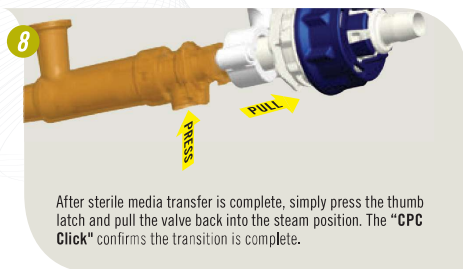
Twist the blue lock ring clockwise until audible "CPC Click." Alignment of the lock ring rib with the body's arrow indicator confirms final connection.



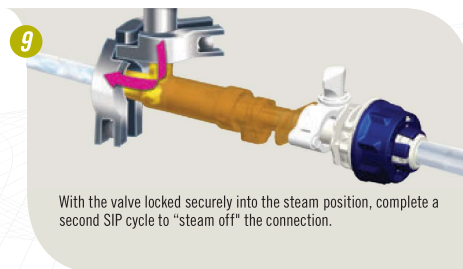
Once the AseptiQuik assembly is complete and the steam trap has been closed, simply press the thumb latch to allow the valve to be pushed into the flow position. The "CPC Click" confirms the transition is complete.



Once the valve is locked into the flow position, you are ready for sterile fluid transfer to or from the process equipment.



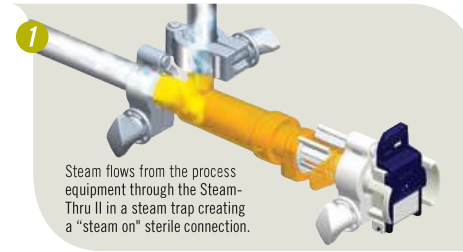
After sterile media transfer is complete, simply press the thumb latch and pull the valve back into the steam position. The "CPC Click" confirms the transition is complete.



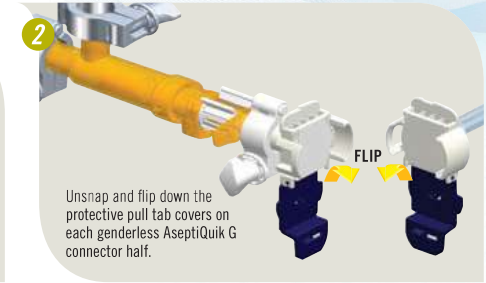
With the valve locked securely into the steam position, complete a second SIP cycle to "steam off" the connection.

ASEPTIQUIK® G STC SERIES ASSEMBLY PROCEDURE

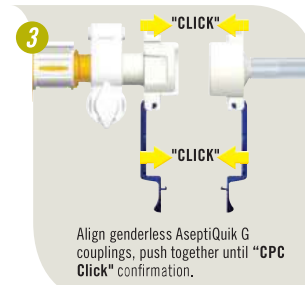
FLIP-CLICK-PULL Assembly Procedure



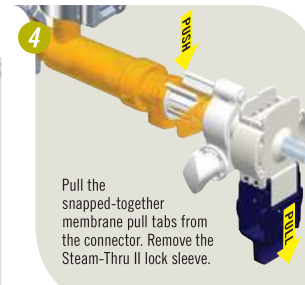
Steam flows from the process equipment through the Steam-Thru II in a steam trap creating a "steam on" sterile connection.



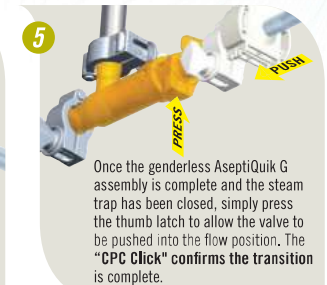
Unsnap and flip down the protective pull tab covers on each genderless AseptiQuik G connector half.



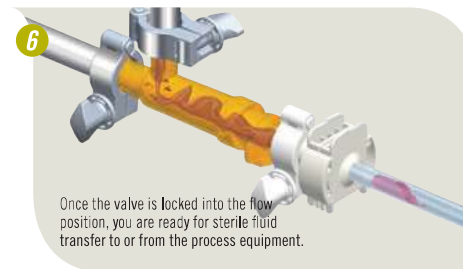
Align genderless AseptiQuik G couplings, push together until "CPC Click" confirmation.



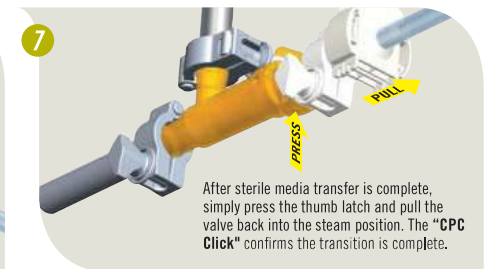
Pull the snapped-together membrane pull tabs from the connector. Remove the Steam-Thru II lock sleeve.



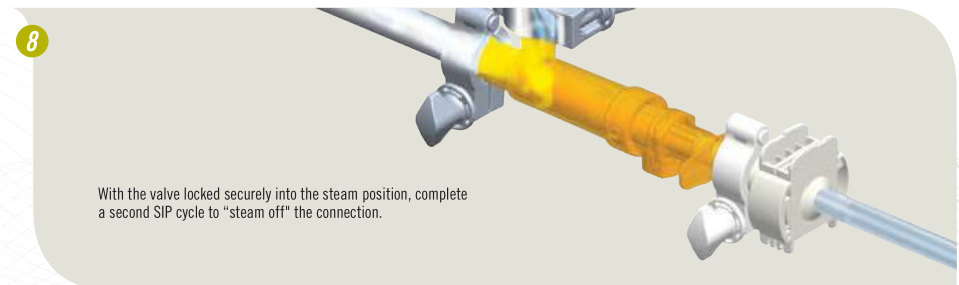
Once the genderless AseptiQuik G assembly is complete and the steam trap has been closed, simply press the thumb latch to allow the valve to be pushed into the flow position. The "CPC Click" confirms the transition is complete.



Once the valve is locked into the flow position, you are ready for sterile fluid transfer to or from the process equipment.



After sterile media transfer is complete, simply press the thumb latch and pull the valve back into the steam position. The "CPC Click" confirms the transition is complete.



With the valve locked securely into the steam position, complete a second SIP cycle to "steam off" the connection.