

# Peter Meyer

## Ball valves

### Segment ball valves

**avintos**  
FLOW CONTROL

#### Features

- Swiss manufacturer
- Eccentrically mounted shaft
- 2 piece design
- Full bore
- Chambered seat
- Replaceable packing in depressurized, built-in condition
- Anti blow-out stem
- Antistatic device
- All valves comply to PED 2014/68/EU
- All valves are in compliance with TA-Luft
- ATEX certification acc. directive 2014/34/EU

#### Technical data

<b>Sizes (mm):</b>	DN 25 – DN 200
<b>Pressure class:</b>	PN 10 – 40 or ANSI Class 150/300 lbs (Other pressure classes on request)
<b>Temperature range:</b>	- 60°C up to +400°C (in acc. to the ratings)
<b>Connections:</b>	Flanges acc. to EN 1092-1
<b>Face-to-face:</b>	Flanged in acc. to EN 558 and ANSI B16.10
<b>Top flange:</b>	In acc. to DIN EN ISO 5211:2001

#### Options

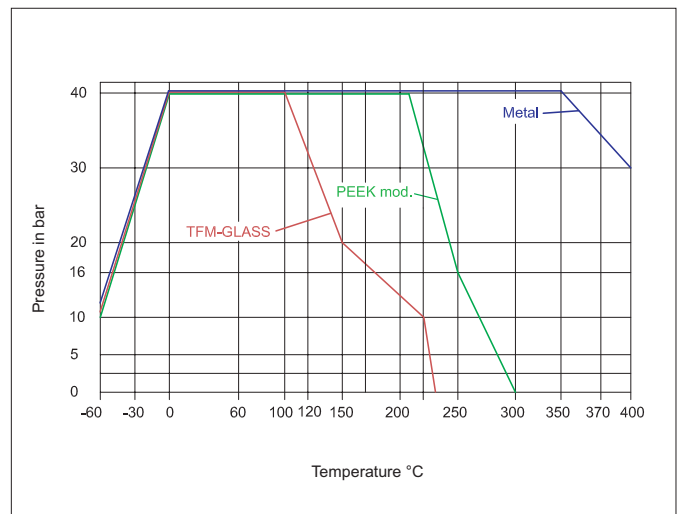
- Stem extension (special length available)
- Double gland packing with monitoring port
- Heating jacket
- Flushing bore
- Different flange facings

#### General applications

Suitable for severe service, where resinous media such as adhesives and colorants, products with catalyst, powders and bulk solids are used.



#### Pressure and Temperature Ratings for the seats



Depending on size and pressure rating

# Segment ball valves

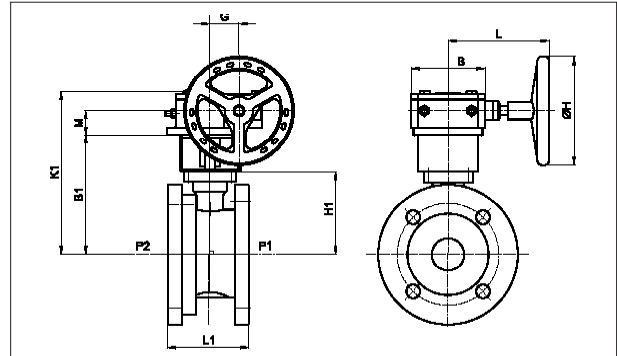
## Dimensions and weight Type C

Wafer type

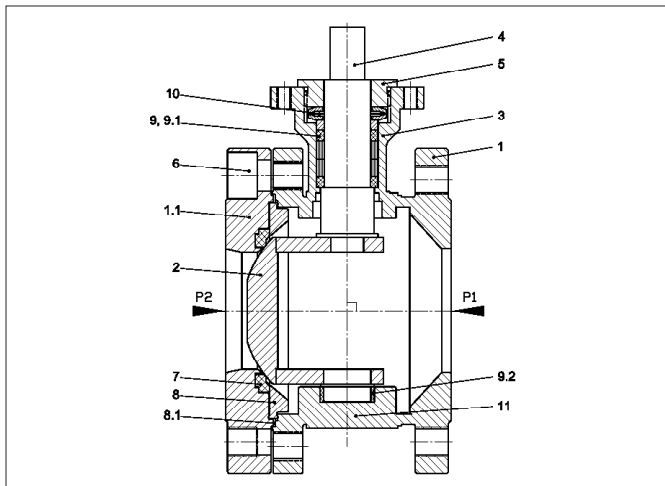
Bare shaft							With manual gear							
DN	PN	L1	H1	ISO 5211	Weight (kg)	Type	B1	K1	M	G	B	L	ØH	Weight (kg)
25	40	60	63	F04	4.5	455-CM 024	123	180	28	45	105	186	150	11
40	40	80	87	F05	8	455-CM 024	147	205	28	45	105	186	150	14
50	40	95	96	F05	12	455-CM 024	156	215	28	45	105	186	150	18
65	16/40	125	124	F07	13	455-CM 030	204	280	34	60	152	327	300	25
80	16/40	150	140	F07	23	455-CM 030	220	295	34	60	152	327	300	35
100	16/40	190	185	F07	30	455-CM 030	265	340	34	60	152	327	300	42
150	16/40	260	290	F12	70	455-CM 050	370	450	38	78	162	318	300	88
200	16/40	330	370	F12	90	455-CM 050	450	530	38	78	162	318	300	108

Intermediate piece for face-to-face acc. to EN 558 series 1 available

Dimensions in mm



## Parts list

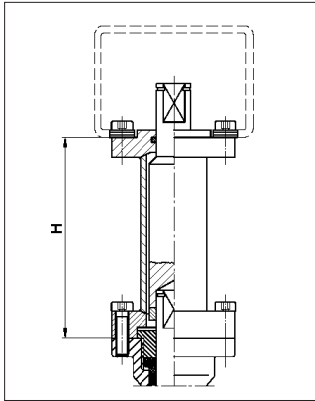


Item	Description	Material	Quantity
1	Body	1.4404	1
1.1	End flange	1.4404	1
2	Segment	1.4404	1
3	Gland	1.4404	1
4	Stem	1.4404	1
5	Gland cover	1.4305	1
6	Screw	DIN 912 A2	
7	Seat	TFM / PEEK / Metal	1
8	Retainer ring	1.4404	1
8.1	Body seal	Gylon / Graphite	1
9	Stem packing	PTFE / Graphite	2
9.1	Bearing ring	PEEK	3
9.2	Bearing bush	PEEK	1
10	Spring washer	1.4310	2
11	Lower trunnion	1.4404	1

# Options

## Stem extension in 1.4307/1.4305/1.4404

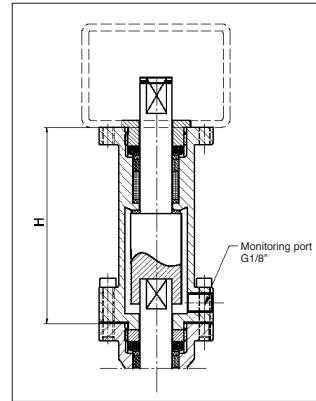
For mounting bracket



DN	Type	H
25	SVL+SVS025032PM	81
40-50	SVL+SVS040050PM	105
65-100	SVL+SVS065100PM	105
150	SVL+AB150000PM	105
200	SVL+AB150000PM	105

## Double gland packing

For mounting bracket

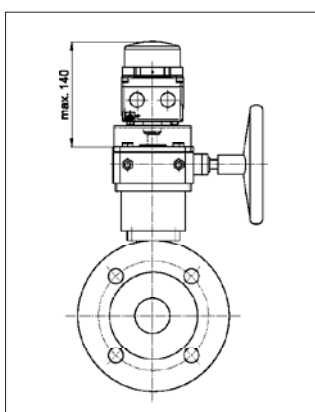


For application involving hazardous media.

DN	Type	H
25	DOSB440425032PM	81
40-50	DOSB440440050PM	105
65-100	DOSB440465100PM	105
150	DOSB4404150PM	160
200	DOSB4404150PM	160

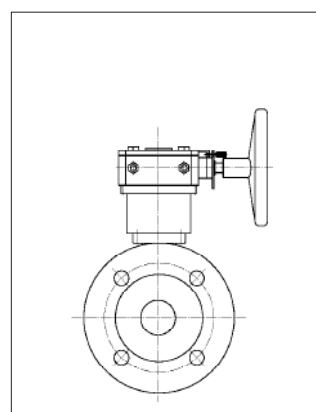
Dimensions in mm

## Assembled limit switch box acc. to VDI/VDE 3845



With Soldo limit switch box type SF

## Locking device



in «open» and «closed» position

Subject to alterations

# Product coding

C 7 C 0 0 2 4404 40 050

## Connections

**C** – Wafer type\*

## Seat/packing material

**3** – TFM-Glass (PTFE graphite)/graphite  
**5** – PEEK mod./graphite  
**6** – Metal KVT 404/graphite  
**7** – Metal KVT 231/graphite\*

## Mounting

**C** – Eccentric\*

## Options 1

**0** – No options\*  
**2** – Flushing bore  
**5** – Grooved to EN 1092-1, Form D  
**6** – Heating jacket in 1.4307  
**M** – Gland sealing and radial guide primary metallic

## Size

**025** – DN 25 / 1"  
**040** – DN 40 / 1½"  
**050** – DN 50 / 2"  
**065** – DN 65 / 2½"  
**080** – DN 80 / 3"  
**100** – DN 100 / 4"  
**150** – DN 150 / 6"  
**200** – DN 200 / 8"

## Pressure rating

**16** – 16 bar (\*DN 65–200)  
**25** – 25 bar  
**40** – 40 bar (\*DN 25–50)  
**15** – 150 lbs  
**30** – 300 lbs

## Body material

**CK15** – 1.1141/1.0570/1.0308  
**4404** – 1.4404\*  
**4435** – 1.4435  
**TIT2** – Titan Grad 2 (3.7035)  
**C276** – Hastelloy C 276  
**TANT** – Tantal

## Actuation

**2** – Bare shaft

## Options 2

**0** – Without\*  
**3** – Gland with Fluoraz O-rings

\* Standard

AV/PMC / CH03-03.15-EN



# Other Products from Peter Meyer & Co. AG



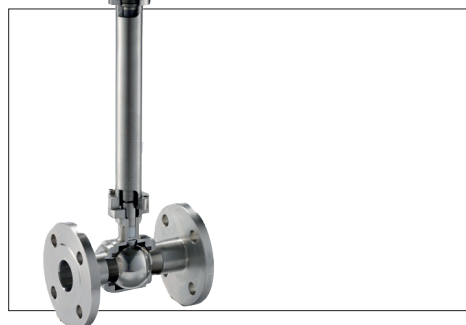
## Standard- and Tank Bottom Valves

- One-piece body design
- Full bore
- Laser welded, without body seal
- Chambered seats
- Integrated cavity pressure relief system



## Cryogenic Ball Valves

- One-piece body design
- Laser welded, without body seal
- Chambered seats
- Integrated cavity pressure relief system
- Suitable for very cold media in cryogenic process installations



## Metal Seated Ball Valves

- One-piece or split body design
- Seats and ball surface coated
- Suitable for high temperature range, for abrasive, erosive and other wide range of applications



## Ball Valves for Solids

- Trunnion mounted design
- Only one seat with pre-loaded spring element
- Full ball or segment
- Seat in metal, PEEK or TFM
- Suitable for dry and abrasive solids, such as powders, ash, and so on



## Top Entry Segment Ball Valves

- Top Entry Design (Valve can be opened from the top)
- Access to the interior parts without removing the valve from the pipeline
- Eccentric mounted shaft
- No cavity
- Especially suitable for chemical, pharmaceutical and food industry in multipurpose plants where fast and good cleaning is required

